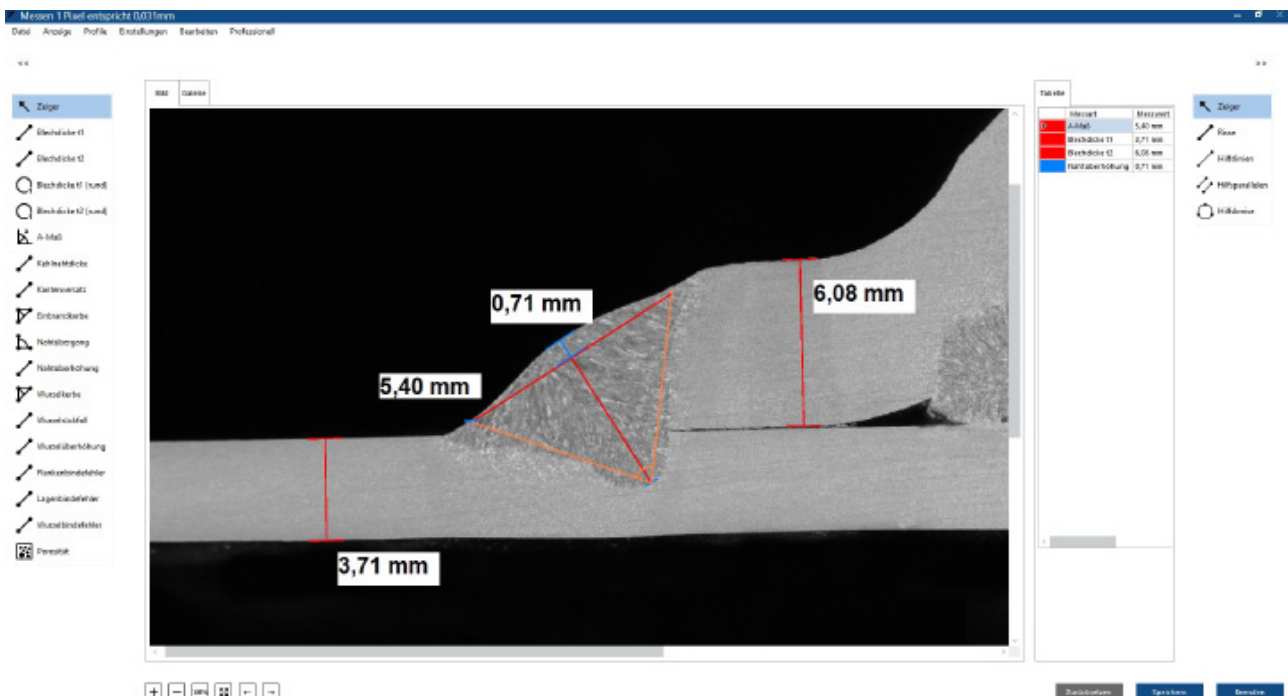


Weld seam



The dhs **weld software module** was specially developed for the evaluation of fusion compounds. Especially in automotive engineering, steel construction and pressure vessel construction, there are components that consist of a large number of welded joints. With the dhs module, all required test procedures are combined into **measurement profiles** and the test sequence can thus take place rationally in terms of time and during production. In addition, it is possible to generate **statistical evaluations** of the individual components and measuring procedures in order to assess the entire manufacturing process in the longer term.

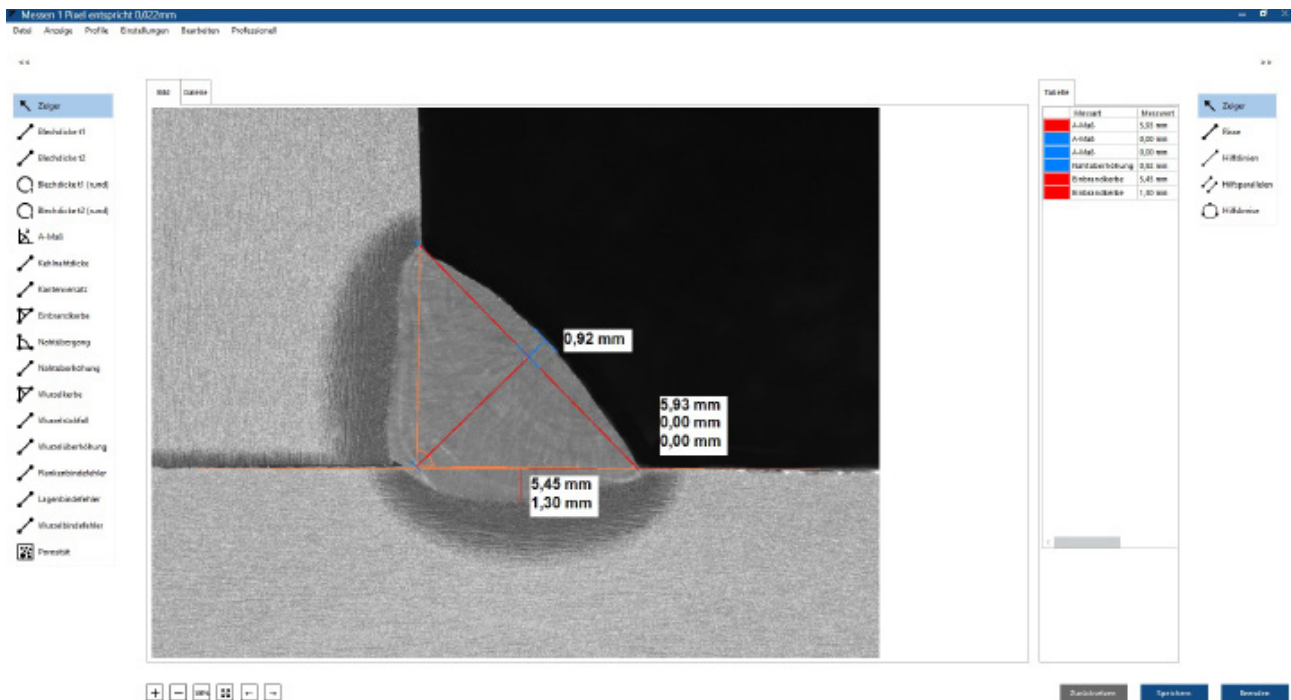


Measurement functions:

- Pore measurement
- Cut perpendicular
- Workpiece thickness
- Seam measurement
- Branding
- Gap, a-Mass
- Fillet weld angle
- ...

Help functions:

- Measurement rotatable
- Measured values can be hidden
- Digital magnifying glass (configurable, for the exact creation of measuring points)
- Measurement lines freely editable (end marks, line thickness, color)
- Continuous measured value display during the measuring process
- Setting warning limits for measured values



Memory options:

All image and measurement data are stored in the **dhs Image Database**. For this purpose, special database fields (e.g. measurement values, measurement specifications, measurement results) are created in the database, which allow an exact assignment.

Statistical evaluations:

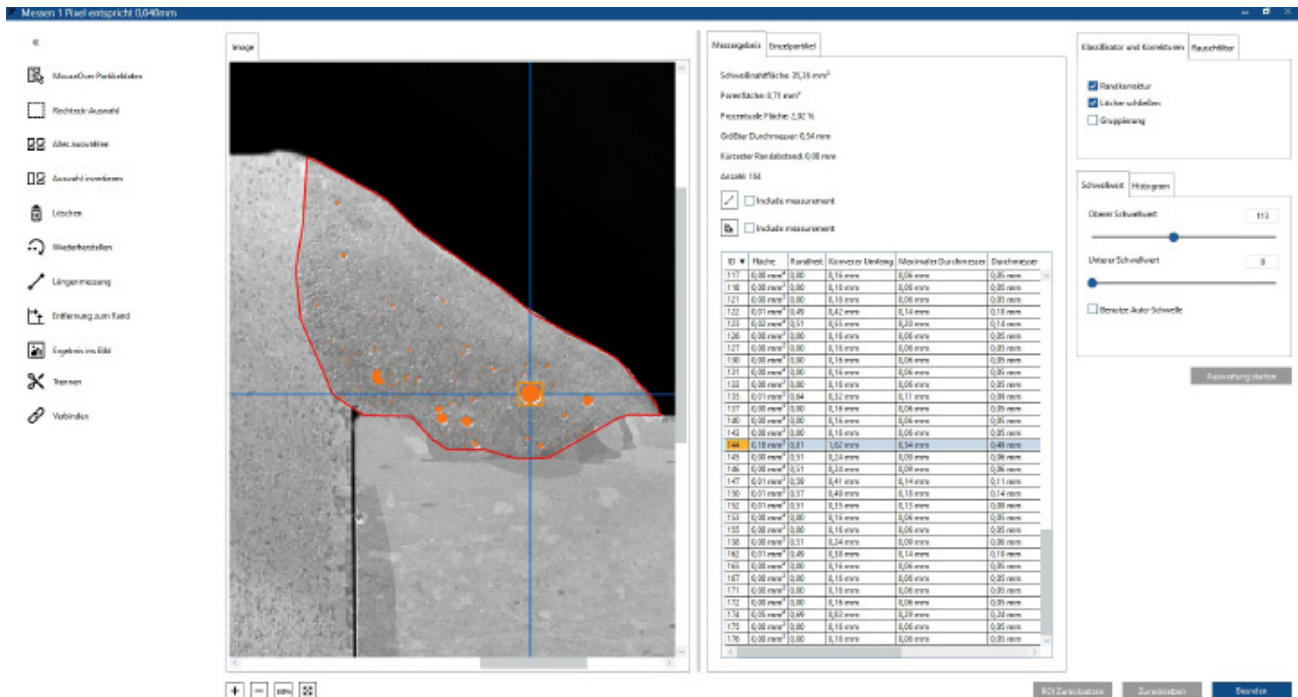
Via the integrated export interface in the basic module of the dhs Image Database, **statistical evaluations** of the individual components and the specific measurement **results** are generated in various formats (e.g. qs-STAT or SAP).

Standard compliant testing:

- Testing according to **DIN ISO 5817** and **other customer-specific specifications and standard**
- Clear display of the measured values in tabular form
- Summary of measurement functions to test profiles in order to reproduce measurement processes
- Display of the tolerance deviation to the selected part specification

Pore measurement:

An extension of the weld seam module also includes the **standard-compliant measurement of pores**. This is used to evaluate the size and area of individual pores. The result is stored in the corresponding data fields together with the measurements of the weld seam.



Report:

With the extension module **Report** we offer the ideal tool for professional documentation of your work. All images, texts, measurement results previously determined in the database can be **compiled and output in a test report**.

Suitable hardware:

For the quick inspection of weld seams, in the low magnification range, **the dhs EasyController 4K** is the ideal alternative (to stereo microscope and macroscope): A compact, inverted optical system with integrated digital camera and LED ring light. In combination with our software modules dhs weld seam measurement and report generation, this is an optimal system for the rational evaluation of specimens and workpieces directly in production.